



MEDIA & UNIVERSITY



RAZORBACK COMMUNICATIONS

The Razorback Communications Office appreciates your interest in Arkansas basketball and strives to assist you in your coverage. A list of our staff members, our address, and our telephone and fax numbers follows:

Office: 479-575-2751
Fax: 479-575-7481
Press Row: 479-575-6622

Mailing Address

Razorback Communications
P.O. Box 7777
Fayetteville, AR 72702-7777

Overnight Address

University of Arkansas
Razorback Communications
1270 Leroy Pond Drive
Fayetteville, AR 72701

BASKETBALL CONTACTS



David Beall
Associate Communications Director

Cell 479-445-5336
Email jdb048@uark.edu
Twitter @beall_sid



Brent Hull
Communications Assistant

Email bwh003@uark.edu
Twitter @brenthull94



Patrick Pierson
Assistant AD



Jeri Thorpe
Associate Director



Joy Ekema-Agbaw
Assistant Director



Zach Lawson
Assistant Director



John Thomas
Assistant Director



Roland Liwag
Content Strategist



Brandon Langlois
Assistant



Austin Miller
Assistant



Taylor McGillis
Digital Strategist



Christine Zambetti
Graphic Designer



Walt Beazley
Photographer



Mary Lynn Gibson
Secretary

GAME CREDENTIALS

All requests for media and/or photo credentials must be made online at www.SportsSystems.com/Arkansas. Requests should be made at least three days prior to the game.

Only fully accredited personnel directly involved in the coverage of the game will be admitted. Credentials are non-transferable. The Communications Office reserves the right to revoke any credential: (1) used by an individual other than the one to whom it was granted; (2) any individual who refused to comply with press row and/or photographic guidelines; (3) any individual who is not an accredited member of the media; and (4) any individual under the age of 16.

Credentials will not be mailed. They must be picked up beginning two hours before tip-off at the media will call door to the right of the south entrance to Bud Walton Arena. Be prepared to present a photo identification when picking up credentials.

MEDIA WILL CALL

Located on the south side of Bud Walton Arena, just right of the main ticket window. All passes are left at media will call - no credentials are mailed.

GAMEDAY PARKING

A limited number of spaces are available around Bud Walton Arena. All requests should be made to Associate Director of Communications David Beall when submitting credential requests.

MEDIA SERVICES

The University of Arkansas has one of the top statistical crews in college basketball. Our crew has worked NCAA Tournament regional championships and conference tournaments. Media will be provided the following:

Game program and notes
Halftime statistics (box score, play-by-play, shot chart)
Final statistics (box score, play-by-play, shot chart)
Postgame notes

GAMEDAY LIVE STATS

Live in-game stats will be provided for the media at <http://arkansas.statbroadcast.com>. No password is required.

MEDIA WORK ROOM

Bud Walton Arena's work room is one of the most spacious in the nation. It is located on the arena floor level, next to and adjoining the interview room. Weekly press briefings and Mike Anderson's postgame press conferences are held in the interview room. Media members can work and file from the work room or the press seating area in the arena. Wireless internet is available in the work room and in the arena. Please see Associate Director of Communications David Beall or a member of the communications staff for login information. In addition, several telephones are available in the work room.

RADIO BROADCASTS

Visiting teams may utilize the four courtesy phone lines available in Bud Walton Arena. ISDN is available. No banners are allowed to hang in front of any broadcast position.



WIRELESS INTERNET

Wireless internet is available at Bud Walton Arena. Please contact a member of the Arkansas Communications Department on game day if you have any problems logging on.

PHOTOGRAPHERS

Bud Walton Arena features two photo "wells," located on the baselines next to each team bench. Tripods are not allowed on the floor at any time during play and photographers must sit on the floor so as to not block the view of spectators. Spots in the photo wells are limited and must be requested in advance of any Arkansas contest. Photographers are not allowed to shoot from either sideline due to space limitations. Arkansas Communications reserves the right to limit the number of strobe units used and requests to hang strobe lights at BWA must be made in writing one week prior to any contest.

SEC TELECONFERENCE

Coach Anderson will participate in the SEC's teleconference on select days throughout the season.

Teleconference Schedule (CT)

10:00 a.m. Bryce Drew, Vanderbilt
 10:07 a.m. Michael White, Florida
 10:14 a.m. Frank Martin, South Carolina
 10:21 a.m. Mark Fox, Georgia
 10:28 a.m. Johnny Jones, LSU
 10:35 a.m. John Calipari, Kentucky
 10:42 a.m. Rick Barnes, Tennessee
 10:49 a.m. Mike Anderson, Arkansas
 10:56 a.m. Avery Johnson, Alabama
 11:03 a.m. Bruce Pearl, Auburn
 11:10 a.m. Andy Kennedy, Ole Miss
 11:17 a.m. Ben Howland, Mississippi State
 11:24 a.m. Kim Anderson, Missouri
 11:31 a.m. Billy Kennedy, Texas A&M

RAZORBACK SPORTS PROPERTIES

The University of Arkansas Athletic Department and Razorback Sports Properties formed a partnership in the fall of 2008. As the multi-media rights-holder, Razorback Sports Properties is responsible for all website, broadcasts, corporate partnerships and marketing of the university's athletics program. Razorback Sports Properties brings a national presence to the overall marketing of Razorback sports.

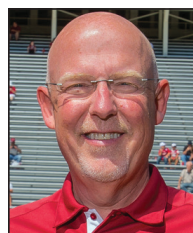
Razorback Sports Properties exclusively produces and markets a variety of radio and television opportunities surrounding Arkansas Athletics, through the Razorback Sports Network from IMG, including all radio play-by-play broadcasts, and television and radio head coaches' shows.

Chuck Barrett is in his sixth season with the Razorback men's basketball team. He has worked with Arkansas for nearly 20 years as the radio personality of the baseball program and took on football duties prior to the 2007 season. The Director of Broadcasting for the Razorback Athletic Department, Barrett has been on both sides of the radio as a talk show host and play-by-play announcer. He has called numerous moments in Arkansas history including three College World Series runs and multiple bowl game appearances.

Matt Zimmerman is in his first season as an analyst in 2016-17. A 20-year coaching veteran and mainstay with the Razorbacks, Zimmerman is in his sixth year with the program and his first as the director of operations, overseeing the day-to-day happenings within the program, including on-campus recruiting, student-athlete visits, team travel, summer camps and the budget.

2016-17 RSN BASKETBALL RADIO NETWORK

Batesville	KWOZ-FM 103.3
Bearden	KBEU-FM 92.7
Berryville	KTHS-AM 1480
Blytheville	KHLS-FM 96.3
Camden	KCXY-FM 95.3
Cherokee Village	KSAR-FM 92.3
Crossett	KAGH-AM 800
Crossett	KAGH-FM 104.9
De Queen	KDON-FM 92.1
DeWitt	KDEW-FM 97.3
El Dorado	KMRX-FM 96.1
Fayetteville	KAKS-FM 99.5
Fayetteville	KUOA-AM 1290
Fayetteville	KIGL-FM 93.3
Fayetteville	KQSM-FM 92.1
Forrest City	KBFC-FM 93.5
Fort Smith	KERX-FM 95.3
Glenwood	KHGZ-AM 670
Glenwood	KHGZ-FM 98.9
Heber Springs	KAWW-AM 1370
Helena	KFFA-AM 1360
Helena	KFFA-FM 103.1
Hope	KHPA-FM 104.9
Horseshoe Bend	KKIK-FM 106.5
Hot Springs	KLBL-FM 104.5
Jonesboro	KEGI-FM 100.5
Little Rock	KABZ-FM 103.7
Magnolia	KZHE-FM 100.5
Marshall	KBCN-FM 104.3
Mena	KTTG-FM 96.3
Monett, MO	KKBL-FM 95.9
Monticello	KGPQ-FM 99.9
Morrilton	KVOM-FM 101.7
Mountain Home	KOMT-FM 107.5
Ozark	KDYN-AM 1540
Ozark	KDYN-FM 96.7
Pocahontas	KPOC-FM 104.1
Pocahontas	KPOC-AM 1420
Russellville	KCAB-AM 980
Russellville	KCJC-FM 102.3
Searcy	KSMD-FM 99.1
Stuttgart	KWAK-FM 105.5
Texarkana, TX	KKTK-AM 1400
Wynne	KWYN-FM 92.5
Wynne	KWYN-AM 1400



Chuck Barrett
Play-By-Play



Matt Zimmerman
Analyst



David Shoemaker
General Manager



**GREG SANKEY
COMMISSIONER
SOUTHEASTERN CONFERENCE**

Greg Sankey became the eighth commissioner of the Southeastern Conference on June 1, 2015, after serving on the SEC staff for 13 years in various leadership positions.

Sankey was an integral part of former commissioner Mike Slive's efforts to reshape the SEC's governance, enforcement and compliance program, and he also oversaw the SEC's championships staff. Most recently he played a central role in crafting the new Autonomy structure of the NCAA, designed put the student-athlete first in the development of new legislation in the 21st century.

He is active within the NCAA committee structure, which includes his current service on the Division I Legislative Council, Committee on Academic Performance and the NCAA Committee on Infractions for which he currently serves as chairman.

Sankey joined the SEC staff in 2002 as Associate Commissioner and was elevated to Executive Associate Commissioner and Chief Operating Officer for the league office in 2012.

Prior to joining the SEC staff, Sankey was Commissioner of the Southland Conference for nearly seven years. He joined the Southland Conference staff in 1992 where he served as both assistant and associate commissioner before he was named commissioner in 1996 at the age of 31.

Prior to his term at the Southland Conference he was director of compliance and academic services at Northwestern State University in Natchitoches, Louisiana. While at Northwestern State, Sankey also coached the Demons' golf teams for two years, earning the Golf Coaches Association of America District VI Coach of the Year award in 1991. Previous to his tenure at Northwestern State, he was the director of intramural sports at Utica College in upstate New York.

On March 12, 2015, the presidents and chancellors of the SEC announced Sankey would succeed Slive as commissioner of the SEC.

A native of Auburn, New York, Sankey earned his master's degree from Syracuse University and his undergraduate degree from the State University of New York College at Cortland. Sankey and his wife, Cathy, reside in Birmingham, Alabama, and have two daughters, Hannah Michelle (22) and Moriah Elizabeth (18).





IN THE SEC TOURNAMENT

1992 (Birmingham, Ala.)
Arkansas 73, Georgia 60
Alabama 90, Arkansas 89
(Semifinals)

1993 (Lexington, Ky.)
Arkansas 65, Georgia 60
Kentucky 92, Arkansas 82
(Semifinals)

1994 (Memphis, Tenn.)
Arkansas 95, Georgia 83
Kentucky 90, Arkansas 78
(Semifinals)

1995 (Atlanta, Ga.)
Arkansas 73, Vanderbilt 72
Arkansas 69, Alabama 58
Kentucky 95, Arkansas 94 (OT)
(Finals)

1996 (New Orleans, La.)
Arkansas 80, South Carolina 58
Kentucky 95, Arkansas 75
(Semifinals)

1997 (Memphis, Tenn.)
Georgia 65, Arkansas 63
(Quarterfinals)

1998 (Atlanta, Ga.)
Arkansas 102, Tennessee 96
Kentucky 99, Arkansas 74
(Semifinals)

1999 (Atlanta, Ga.)
Arkansas 75, Florida 74
Arkansas 84, Miss. St. 79 (OT)
Kentucky 76, Arkansas 63
(Finals)

2000 (Atlanta, Ga.)
Arkansas 71, Georgia 64
Arkansas 86, Kentucky 72
Arkansas 69, LSU 67
Arkansas 75, Auburn 67
(Finals)

2001 (Nashville, Tenn.)
Arkansas 77, LSU 72
Kentucky 87, Arkansas 78
(Semifinals)

2002 (Atlanta, Ga.)
Tennessee 68, Arkansas 61
(First Round)

2003 (New Orleans, La.)
LSU 85, Arkansas 56
(First Round)

2004 (Atlanta, Ga.)
South Carolina 91, Arkansas 81
(First Round)

2005 (Atlanta, Ga.)
Tennessee 65, Arkansas 46
(First Round)

2006 (Atlanta, Ga.)
Arkansas 80, Georgia 67
Florida 74, Arkansas 71
(Quarterfinals)

2007 (Atlanta, Ga.)
Arkansas 82, South Carolina 52
Arkansas 72, Vanderbilt 71
Arkansas 81, Mississippi St. 72
Florida 77, Arkansas 56
(Finals)

2008 (Atlanta, Ga.)
Arkansas 81, Vanderbilt 75
Arkansas 92, Tennessee 91
Georgia 66, Arkansas 57
(Finals)

2009 (Tampa, Fla.)
Florida 73, Arkansas 58
(First Round)

2010 (Nashville, Tenn.)
Georgia 77, Arkansas 64
(First Round)

2011 (Atlanta, Ga.)
Tennessee 74, Arkansas 68
(First Round)

2012 (New Orleans, La.)
LSU 70, Arkansas 54
(First Round)

2013 (Nashville, Tenn.)
Vanderbilt 75, Arkansas 72
(First Round)

2014 (Atlanta, Ga.)
South Carolina 71, Arkansas 69
(First Round)

2015 (Nashville, Tenn.)
Arkansas 80, Tennessee 72
Arkansas 60, Georgia 49
Kentucky 78, Arkansas 63
(Finals)

2016 (Nashville, Tenn.)
Florida 68, Arkansas 61
(Second Round)

RECORD BY OPPONENT

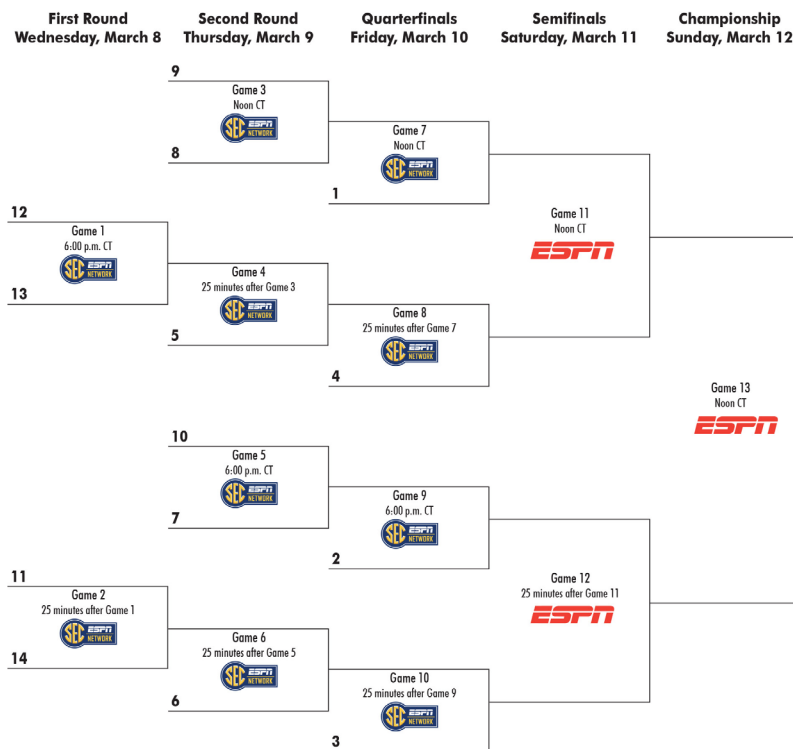
Opponent	Record	Last Meeting
Alabama	1-1	1995, W, 69-58 (semifinals)
Auburn	1-0	2000, W, 75-67 (finals)
Florida	1-4	2016, L, 68-61 (2nd)
Georgia	6-3	2015, W, 60-49 (semifinals)
Kentucky	1-8	2015, L, 78-63 (finals)
LSU	2-2	2012, W, 70-54 (1st)
Ole Miss	0-0	n/a
Mississippi St.	2-0	2007, W, 81-72 (semifinals)
Missouri	0-0	n/a
South Carolina	2-2	2014, L, 71-69 (1st)
Tennessee	3-3	2015, W 80-72 (quarterfinals)
Texas A&M	0-0	n/a
Vanderbilt	3-1	2013, L 75-72 (1st)

RECORD BY ROUND

	Record	Appearances
First Round	3-10	12 (2000, 02-07, 09-14)
Second Round	0-1	1 (2016)
Quarterfinals	12-2	14 (1992-01, 06-08, 2015)
Semifinals	6-6	12 (1992-96, 98-01, 07-08, 2015)
Finals	1-5	6 (1995, 99, 2000, 07-08, 2015)

2017 SEC MEN'S BASKETBALL TOURNAMENT BRACKET

March 8-12 - Bridgestone Arena - Nashville, Tenn.



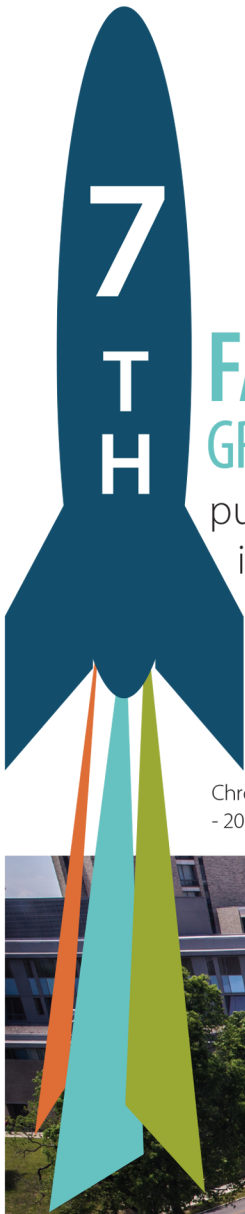
Bridgestone Arena in Nashville, Tennessee will host the 2017 SEC Tournament for the third time in the last four years.



There's a reason...

...the University of Arkansas is one of the nation's fastest growing universities. Nestled in the Ozarks, we learn in one of the **best places to live** in the nation. This is where **tradition and innovation** work together to keep us grounded as students and faculty make discoveries that **improve our world**. The University of Arkansas is among the **top public research** universities in the U.S., that's why federal agencies like NASA and top industries turn to us to **solve problems and advance technology**. This is where we grow our world, one student at a time, by **leading change and changing lives**.





**MOST DEGREE
PROGRAMS IN
THE STATE**

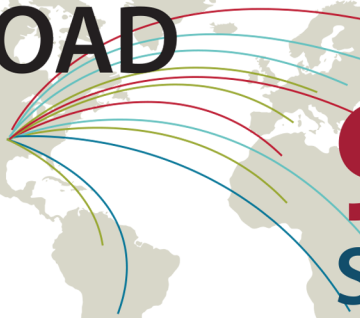


More than 200
baccalaureate, master's,
doctoral, professional and
specialist degree programs.

**FASTEST
GROWING**

public doctoral
institution in
the country

**STUDY
ABROAD**



900+
STUDENTS
50+ countries

Chronicle of Higher Education
- 2015



NATIONALLY COMPETITIVE AWARDS



GOLDWATER SCHOLARS

16th among all public universities

TRUMAN SCHOLARS

11th among all public universities



RHODES SCHOLARS

38th in nation among public universities

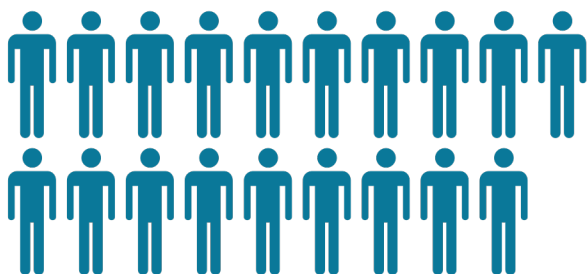
INNOVATIVE RESEARCH CENTERS

Alan Mantooth, Distinguished Professor of electrical engineering, will direct a new

\$15 million national center devoted to protecting the nation's power grid from cyber attacks.

Min Zou, professor of mechanical engineering, will lead a new

\$20 million Center for Surface Engineering to develop new technology for industries.



Enrollment: **26,754**
Student-to-Faculty Ratio **19:1**

Fall 2015



MILITARY FRIENDLY

– Guide to Military Friendly Schools
7th year in a row



81%

incoming

HONORS COLLEGE

freshman fellows hail from Arkansas



PROMISE GRANT

Largest grant ever awarded to the U

of A to College of Education and Health Professions and Arkansas Department of Education from U.S. Department of Education to fund a program aimed at improving the education and career outcomes of low-income Arkansas teens with disabilities.

'GREEN RECOGNITION': THE PRINCETON REVIEW'S GUIDE TO 353 GREEN COLLEGES: 2015 EDITION



Greenhouse gas emissions were reduced by **9.47%** while our campus community grew by **54.92%** and square footage increased by **21.65%** since 2002.

Nearly **\$52 million** has been invested in energy savings performance contracts.



RESEARCH EXPENDITURES

JUMPED 9%

IN FY15 TO

**\$133.7
MILLION**

THE HIGHEST EVER

Senior Walk

Our greatest achievements are etched in stone at the University of Arkansas, with more than 5 miles of sidewalk bearing the names of all of our graduates. This unique tradition stretches across campus, Senior Walk includes the names of more than 170,000 graduates, and counting.

Notable Graduates

Jerry Jones, owner of the Dallas Cowboys
Veronica Campbell-Brown, Olympic gold medalist
Stacy Lewis, LPGA golfer
Doug McMillon, President and CEO of WalMart Stores, Inc.

**DR. JOSEPH E. STEINMETZ
CHANCELLOR**

Joseph E. Steinmetz became the sixth chancellor of the University of Arkansas on January 1, 2016. Prior to this appointment, he was Ohio State's chief academic officer. As executive vice president and provost, he oversaw the administration, coordination, and development of all academic functions of the university.

Dr. Steinmetz joined Ohio State in 2009 to serve as vice provost for arts and sciences and executive dean of the then-new College of Arts and Sciences. With his leadership, the former five independent colleges of arts and sciences were unified into the largest arts and sciences college in the country.

Before Ohio State, Dr. Steinmetz was dean of the College of Liberal Arts and Sciences at the University of Kansas, where he was also a university distinguished professor. Before Kansas, Dr. Steinmetz spent 19 years at Indiana University, Bloomington where he served as Chair of the Department of Psychology, Executive Associate Dean of Arts and Sciences and a Distinguished Professor of Psychological and Brain Science.

A nationally respected behavioral neuroscientist, Dr. Steinmetz was recognized in 1996 by the National Academy of Sciences for his contributions to the fields of experimental psychology and neuroscience. In 2012 he was named an AAAS Fellow.

His research interests include neuroanatomical and neurophysiological substrates of learning and memory; the effects of alcohol on neural and behavioral function; neurobiological and behavioral models of fetal alcohol syndrome; and the neurobiology of simple human learning, memory, and cognitive function.

Dr. Steinmetz earned his bachelor's and master's degrees at Central Michigan University and his doctorate at Ohio University. He and his wife, Sandy, have two sons and four grandchildren.

**DR. SHARON HUNT
FACULTY ATHLETICS REP**

Chancellor G. David Gearhart appointed Dr. Sharon Hunt to be the faculty athletics representative (FAR) for the University of Arkansas in August 2010.

Dr. Hunt is the first woman and non-lawyer to hold the post. Dr. Hunt has been on the University of Arkansas faculty since 1990, and she served as the department head of the recently renamed Department of Health, Human Performance and Recreation

from July 1, 1990 until June 30, 2011 except for the 2000-01 academic year, when she served as the interim dean of the College of Education and Health Professions. On June 30, 2011 Dr. Hunt stepped down as department head and returned to the faculty at the rank of Professor giving her more time to devote to the FAR position.

A high school athlete, Hunt's involvement with collegiate athletics dates back to her own college days at the University of Arkansas when she played extramural sports with the women's basketball and tennis teams prior to the enactment of Title IX. After receiving her bachelor's and master's degrees in physical education from the university, she went on to earn a Doctor of Education degree from the University of Georgia, where she taught a variety of undergraduate courses as a graduate assistant. Upon the completion of her doctoral degree, she joined the faculty of the University of Kentucky for 13 years, where she taught both undergraduate and graduate courses and served as the graduate coordinator for the Department of Health, Physical Education and Recreation. In 1990, she and her family returned to Fayetteville.

The FAR's responsibilities lie in three broad areas: academic integrity within the athletics program, student-athlete well-being, and institutional control of the athletics program. Dr. Hunt is involved in the student-athlete advisory council on campus and chairs the Academic Credential Review Committee and Athletic's Academic Integrity Committee, and serves as an ex-officio member of the Faculty Athletics Committee. In addition, she travels to represent the University of Arkansas at various SEC and NCAA meetings.

Dr. Hunt was instrumental in establishing the graduate athletic training education program in the College of Education and Health Professions, and she has worked closely with athletics on that program. The athletics department provides support to students in the athletic training education program in the form of a stipend, books and travel to the Arkansas Athletic Trainers' Association annual meeting. Two endowed scholarships for athletic training students in honor of longtime Razorback trainers Dean Weber and the late Bill Ferrell were established through the athletics department. Dr. Hunt has been married to David Hunt since 1973, and they have an adult son and daughter as well as one grandson and granddaughter.



UNIVERSITY OF ARKANSAS LEADERSHIP

The Board of Trustees of the University of Arkansas serve as the institution's governing body. The board is comprised of 10 trustees representing each of the state's four congressional districts. The president is the chief executive officer of the University of Arkansas System and reports to the Board of Trustees. Each campus has a chancellor as its chief executive officer, reporting directly to the president.

BOARD OF TRUSTEES



Donald R. Bobbitt
System President



Dr. Joseph Steinmetz
Chancellor



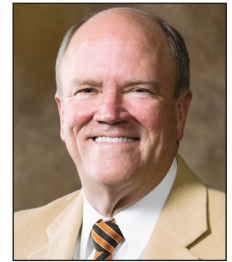
Reynie Rutledge
Chairman
Searcy (2017)



David H. Pryor
Vice Chairman
Fayetteville (2019)



Morril Harriman
Secretary
Little Rock (2024)



Mark Waldrip
Assistant Secretary
Moro (2020)

CAMPUS LEADERSHIP FAYETTEVILLE EXECUTIVE COMMITTEE

Dr. Joseph Steinmetz
Chancellor

Laura Jacobs
Associate Vice Chancellor and Chief of Staff

Bill Kincaid
Associate General Counsel

Jeff Long
Vice Chancellor for Intercollegiate Athletics

Randy Massanelli
Vice Chancellor for Governmental Relations

Tom O'Donnell
Vice Chancellor for Finance & Administration

Marcia Overby
Associate Vice Chancellor for Administration

Charles Robinson
Vice Provost for Student Affairs and
Vice Chancellor for Diversity and Community

Ashok Saxena
Provost and Vice Chancellor for Academic Affairs

Mark Power
Interim Vice Chancellor for Advancement

A MESSAGE FROM THE CHANCELLOR, DR. JOE STEINMETZ

Bud Walton Arena has a well-deserved reputation for being a tough place to play for visiting teams. Coach Anderson and his team deserve most of the credit, but you deserve some, too, because your LOUD and energetic support makes winning here a daunting task for opposing teams. So let's do our best to keep our home court advantage alive this year by cheering on the Hogs.

At the University of Arkansas, we're extremely proud of Razorback athletics and our student athletes. Our athletics department is perennially recognized as being among the top 25 department in the country.

Last spring, our student athletes also had a combined GPA of 3.23 – the thirteenth consecutive semester the department exceeded 3.0. More importantly, 76 Razorback student-athletes were eligible to participate in spring commencement ceremonies. Combined with fall commencement ceremonies, 100 Razorback student-athletes added their name to Senior Walk as graduates of the University of Arkansas.

I am very proud of the fact that our student-athletes excel in academics as well as in athletics – and you should be proud, too. After all, you're helping to make it happen.

On behalf of the University of Arkansas, thank you for your support of our students, faculty, and staff. We couldn't do it without you.

Go Hogs!
Dr. Joe Steinmetz
Chancellor



Ben Hyneman
Jonesboro (2018)



John Goodson
Texarkana (2021)



Stephen Broughton, M.D.
Pine Bluff (2022)



C.C. "Cliff" Gibson III
Monticello (2023)



Sheffield Nelson
Little Rock (2025)



Kelly Eichler
Little Rock (2026)



Entering his ninth full year as Vice Chancellor and Director of Athletics, Jeff Long has helped transform the University of Arkansas' Department of Intercollegiate Athletics into one of the most successful and mission driven programs in the country. Long, the 2015 SportsBusiness Journal (SBJ) and SportsBusiness Daily (SBD) Athletic Director of the Year, leads a program that encompasses 19 sports and more than 460 student-athletes.

Long has focused every aspect of the Razorback program on achieving the mission of developing student-athletes to their full-potential through intercollegiate athletics. In the process, he has also emerged as nationally respected leader within intercollegiate athletics and an influential voice on issues pertaining to student-athletes and their collegiate experience.

Long served as the inaugural College Football Playoff selection chairman for the 2014 and 2015 seasons and remains a member of the selection committee through 2017. He also currently serves as the athletics director representative on the Southeastern Conference's Executive Committee.

Even while representing his institution and the state in some of the most prestigious leadership positions in college sports, Long has guided the Razorback program to unprecedented success. In Long's tenure, Arkansas has captured 29 conference championships and advanced to 123 post-season competitions, including the school's first Bowl Championship Series appearance in football and national titles at the 2013 NCAA Men's Indoor and the 2015 NCAA Women's Indoor Track and Field Championships and the 2016 NCAA Outdoor Track and Field Championships. In 2015-16, Arkansas finished among the top 30 in the Learfield Sports Directors Cup for the eighth time in nine years, including the top 25 for the seventh time in that span. In addition to the second women's national title in as many years, the Razorbacks completed a 2015-16 SEC triple crown in both men's and women's track and field winning all six team titles in cross country, indoor and outdoor track and field.

In the classroom, the Razorbacks continue to set new standards including posting a school record student-athlete grade point average of 3.25 in the fall 2015 semester. Arkansas led the conference in selections to the SEC Fall Academic Honor Roll, including a league high 40 football student-athletes. Razorback student-athletes finished the academic year with a 3.23 GPA in the spring semester marking the 13th consecutive term Razorback student-athletes posted a GPA exceeding 3.0. For the fourth consecutive year, Arkansas exceeded the national APR multi-year rate in all 19 sports. Graduation success rates continue to rise with an average of 100 current or former Razorback student-athletes graduating each year.

Student-athlete development has also been a priority. A \$10.65 million gift from the family of former Razorback and Dallas Cowboys owner Jerry Jones, the largest gift to athletics in more than two decades, transformed an already nationally recognized program into one that rivals any in the country. The Jerry and Gene Jones Family Student-Athlete Success Center is a 55,000 square foot facility dedicated to the development of more than 460 Razorback student-athletes.

Even before his appointment as the CFP Selection Committee's Chairman, Long's leadership and unwavering commitment to the student-athletes and maintaining integrity within intercollegiate athletics had not gone unnoticed. In 2013, Long was named as an Under Armour Athletics Director of the Year for the Football Bowl Subdivision. In 2012, Long was named a finalist for the SBJ/SBD Athletic Director of the Year. In the spring of 2012, the Donald W. Reynolds Foundation and longtime chairman Fred W. Smith made a combined gift of more than \$1.25 million to the program in recognition of Long's leadership of Razorback Athletics.

A member of the Chancellor's Executive Committee, Long is helping to chart the course for the future of higher education at the University of Arkansas while integrating Razorback Athletics into the campus community. Arkansas is one of less than 25 institutions in the nation to have a financially self-sustaining athletics department. Razorback Athletics receives no state funding and does not collect a student fee. In fact, the department routinely gives millions of dollars each year to support other campus academic programs.



The Long family (l-r): Stephanie, Fanny, Jeff and Christina.



In each of the past six years, Razorback Athletics has transferred funds totaling more than \$1 million to support the university's academic mission. For 2016-17, the department's total support of university and student programs and initiatives will include more than \$3.325 million in direct funding of academic programs including financial support for Champions Hall, a new classroom and laboratory building, to serve the entire University of Arkansas student population.

Long was selected to replace legendary athletic director and former Razorback football coach Frank Broyles and even before he officially took the reins on Jan. 1, 2008, Arkansas announced that it would combine its previously independent men's and women's athletic programs. Long adeptly blended the athletic programs into one unified department and established a new administrative structure.

Under Long's leadership, the program has fortified its financial standing ensuring more support for the development of student-athletes. As economic indicators were beginning to point toward challenging economic times, Long signed Arkansas to a



decade long deal with IMG College to form Razorback Sports Properties that guaranteed the Razorback program \$73 million. Long also negotiated an extensive all sports apparel and footwear agreement with NIKE, Inc. for all 19 Razorback sports programs.

In 2010, Long moved to help meet the growing financial needs of fielding a nationally competitive all sports program. The athletic department launched the "Answer the Call" campaign through the Razorback Foundation which resulted in more than 2,600 new members and helped generate more than \$6.5 million in additional support for Razorback student-athletes.

With an eye towards the future, Long commissioned a comprehensive plan to assess the future facility needs of the program. Unveiled in October 2011, the Razorback Athletic Facilities Master Plan provided a vision and the road map for \$320 million of facility renovations and additions that will help all 19 Razorback sports remain competitive in the SEC and nationally over the next 30 years.

Projects already completed as part of the plan include the Fred W. Smith Football Center, the Fowler Family Baseball and Track Training Center, extensive renovations of the George Billingsley Tennis Center, John McDonnell Field (outdoor track and field), Razorback Field (soccer) and the Fred W. Smith and Mary B. Smith Golf Training Facility. In the fall of 2015, a Basketball Performance Center and the Jerry and Gene Jones Family Student-Athlete Success Center opened to Razorback student-athletes.

In June 2016, the University of Arkansas Board of Trustees approved a \$160 million Donald W. Reynolds Razorback Stadium Renovation and North End Zone Addition that will be completed in time for the 2018 football season. No university funds, state funds or student fees will be required to complete the project.

According to a recent economic impact study, Razorback Athletics will have an estimated economic impact of more than \$1 billion in five years. The study estimated Razorback Athletics generates \$162.7 million annually to the region's economy. In addition, recent athletic construction has generated another \$110.9 million for the region.

A veteran administrator with a track record of the highest commitment to the concept of "student-athlete," Long has had more than two decades experience in athletic administration at the Division I level including at the University of Pittsburgh, University of Oklahoma, University of Michigan, Virginia Tech University, Eastern Kentucky University and Rice University. Long also understands the coach's perspective from time spent in coaching staff positions at Duke University, University of Michigan and North Carolina State University.

His experience as an athletic director and administrator in five of the six Bowl Championship Series conferences - the Big 12, Big Ten, Big East, Atlantic Coast and SEC - gives Long a uniquely informed perspective on intercollegiate athletics.

On the forefront of NCAA governance, Long has served on the NCAA Management Council, the NCAA's Sports Wagering Task Force and as a member of the Executive Committee of the Division I-A Athletic Directors' Association. Long served on the NCAA Championships/Sports Management Cabinet.

Prior to assuming his current roles at Arkansas, Long served for four years as the athletic director at the University of Pittsburgh. Long redefined Pitt athletics, most notably through the "Quest for Excellence" campaign that raised nearly \$34 million to enhance the student-athlete experience. During his tenure, the program was selected No. 17 in the nation in the 2006 Sports Illustrated on Campus' All-Sport Rankings.

Before arriving at Pitt, Long was senior associate athletic director at Oklahoma for two and a half years overseeing external affairs for the Sooners. In addition, Long was the primary administrator for the Sooners' highly successful football and men's basketball programs, along with sport supervision of baseball, wrestling and both golf teams.

Long's first appointment as a director of athletics was at Eastern Kentucky where he served for two and a half years. Prior to Eastern, Long had a brief stay with Virginia Tech as an associate athletics director.

He began his career in college athletic administration at Michigan, hired by legendary coach and athletics director, the late Bo Schembechler. During his seasons with the Wolverines, Long was promoted through a series of posts to the position of associate athletics director.

A former two-sport athlete at Ohio Wesleyan, Long earned seven varsity letters for the Bishops in football and baseball before completing his degree in economics in 1982. He started his post-graduate career in athletics working on head coach Tom Reed's staff as a graduate assistant football coach at the cradle of coaches, Miami University of Ohio. Long earned his master's in education at Miami in 1983, moving on to football staff positions at Rice, Duke and N.C. State prior to joining Michigan.

An Ohio native from Kettering, Long is married to the former Fanny Gellrich of Ann Arbor, Mich. The Longs have two daughters, Stephanie and Christina. In spring 2016, Stephanie graduated Summa Cum Laude with two degrees from the Fulbright College of Arts and Sciences. She is currently enrolled in graduate school at the University of Arkansas. Christina is a senior honors student at Fayetteville High School. She is also a contributing photographer for Razorback Athletics.



Jeff Long presents former Arkansas head coach and Naismith Basketball Hall of Famer Nolan Richardson a replica of his banner unveiled Feb. 24, 2015, at Bud Walton Arena.



ADMINISTRATION



JEFF LONG
Vice Chancellor &
Director of Athletics



JULIE CROMER PEOPLES
Senior Associate AD/SWA
Admin & Sport Programs



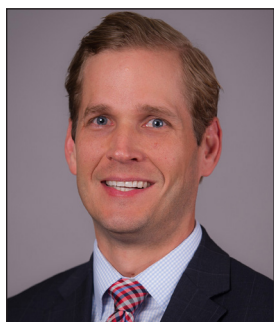
MATT TRANTHAM
Senior Associate AD
Internal Operations



JON FAGG
Senior Associate AD
Development & Administration



CLAYTON HAMILTON
Senior Associate AD
Business Operations & CFO



CHRIS FREET
Senior Associate AD
External Ops & Strategic Comm.



CHRIS POHL
Associate AD
Event Management & Sport Admin.



KEVIN TRAINOR
Associate AD
Public Relations



JUSTIN MALAND
Associate AD
Facilities



ELVIS MOYA
Associate AD
Marketing & Fan Development



TRACEY STEHLIK
Associate AD
Compliance



CHARLES SMALL
Assistant AD
Academic Services



MICHELLE GLOVER
Assistant AD
Broadcast Services



MARCUS SEDBERRY
Assistant AD
S-A Development & Admin.



PATRICK PIERSON
Assistant AD
Communications



MARK TAURISANI
Assistant AD
Football Operations



JOHN GOURLAY
Assistant AD
Development



SCOTT SARGENT
Assistant AD
Facilities



CHARLIE ARVISO
Assistant AD
Ticket Sales



DAVE VAN HORN
Baseball



MIKE ANDERSON
Men's Basketball



JIMMY DYKES
Women's Basketball



CHRIS BUCKNAM
Men's Cross Country/
Track & Field



LANCE HARTER
Women's Cross Country/
Track & Field



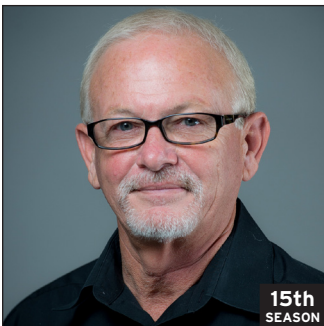
BRET BIELEMA
Football



BRAD McMAKIN
Men's Golf



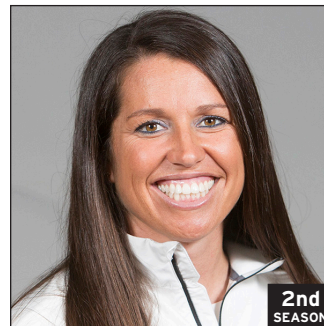
SHAUNA ESTES-TAYLOR
Women's Golf



MARK COOK
Gymnastics



COLBY HALE
Women's Soccer



COURTNEY DEIFEL
Softball



NEIL HARPER
Swimming & Diving



ANDY JACKSON
Men's Tennis



MICHAEL HEGARTY
Women's Tennis



JASON WATSON
Volleyball



SUPPORT STAFF



MARK POWELL

Team Physician



DAVID BEALL

Communications



BRANDON MORRIS

Academics



MARCUS JENNINGS

Equipment



JT GEREN

Marketing



BRYCE DANIELS

Strength & Conditioning



CHASE GARDNER

Strength & Conditioning



BAILEY HAYES

Student Athletic Trainer





ABOUT THE FOUNDATION

As the primary fundraising organization for Arkansas Athletics, the mission of the Razorback Foundation Inc. is to support the athletic endeavors of the University of Arkansas. The Foundation assists our student-athletes by providing financial support for scholarships, facilities and various programs that enable them to realize their dreams of achieving a quality college education while participating in athletics on a nationally competitive level.

WHY WE NEED YOUR HELP

Through contributions from our members, we are able to provide scholarship support for more than 460 student-athletes, funding for facility enhancements and financial assistance to other programs designed to elevate student-athletes and Arkansas Athletics.

Being an active Foundation member is not only an investment in our athletic program and in the athletic and academic success of our student-athletes, it also unlocks many special benefits to you. Those include priority access to season tickets, single-game tickets, parking, priority points, membership thank you packet, invitations to exclusive member-only events plus more!

JOIN TODAY!

There is no better way to support Razorback Athletics than to contribute to the Razorback Foundation Annual Fund. Your gift, no matter the size, will significantly impact the life of every Razorback student-athlete. Several membership levels are available and you may designate your gift(s) to football, men's basketball, baseball, men's Olympic sports and/or women's sports. Gifts may be made outright or via automatic payment plans. The Foundation also offers a Collegiate Membership for current University of Arkansas students as well as a Young Alumni Program for recent graduates.

For more information about membership levels, benefits and other giving opportunities, please contact us at 877-436-0013 or gohogs@razorbackfoundation.com. More information may be found at razorbackfoundation.com.



SCOTT VARADY
Executive Director
& General Counsel



BILLYE VETETO
Chief Financial Officer



JOHN MATSKO
Senior Associate
Director



MARVIN CASTON
Senior Director of
Development



NORM DeBRIYN
Director of Development



SUSIE SHINN
Director of Development



MICA STROTHER
Director of Development



TERRY PRENTICE
Associate Director
of Development



ELIZABETH SULLIVAN
Associate Director
of Development



HUNTER SAGELY
Assistant Director
of Development



DEAN WEBER
Assistant Director
of Development



CHARLOTTE FAUCETTE
Member Relations



CASSY JULICH
Member Relations/
Receptionist



JACKIE ROLLINS
Member Relations/
Assistant to the
Executive Director



DEBBIE SCOGGIN
Member Relations



JULIA WOODS
Member Relations



HAROLD HORTON
Executive Director
Emeritus

IT JUST
MEANS
MORE.™



SECSports.com #ItJustMeansMore